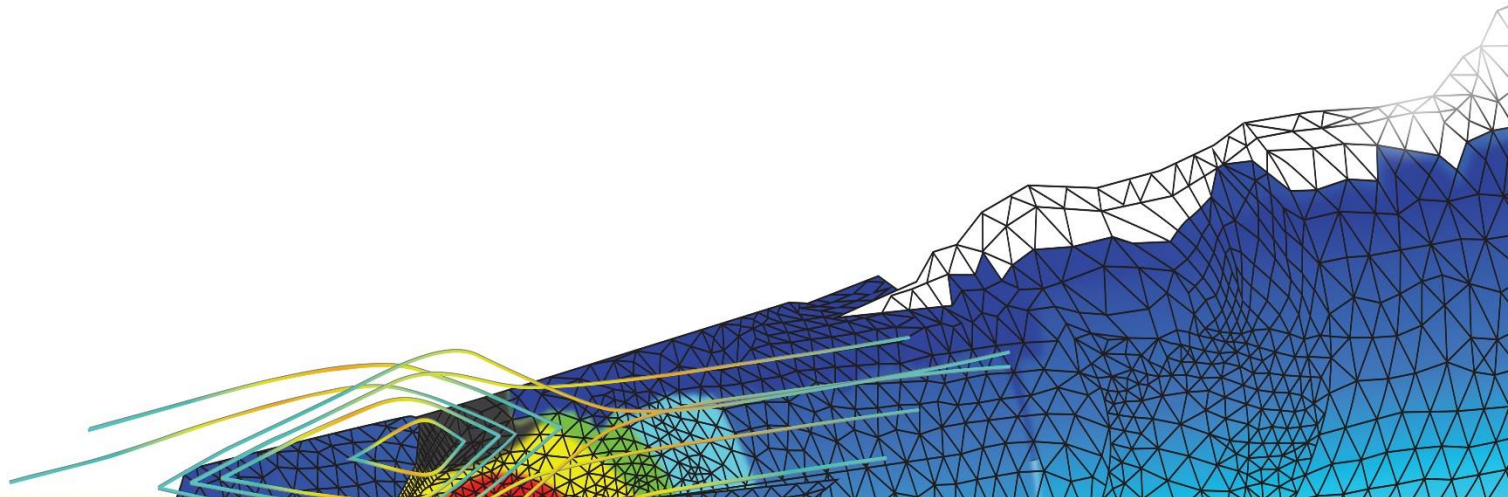




Polyflow 2019 R1 Highlights



2019 R1 Highlights:

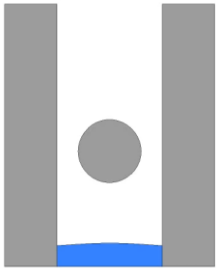
- **Fluid-Fluid contact enhancement**
- **Rotating mold for pressing, blow molding, thermoforming**

Fluid-Fluid contact enhancement

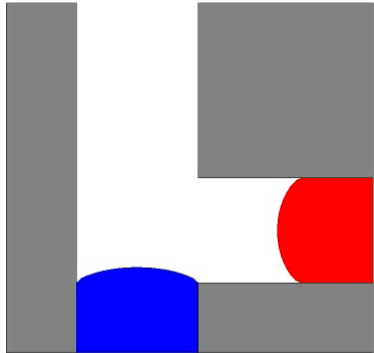
Fluid-Fluid contact can now be defined in all configurations, including one single subdomain with one single free surface. Auto contact is thus supported.



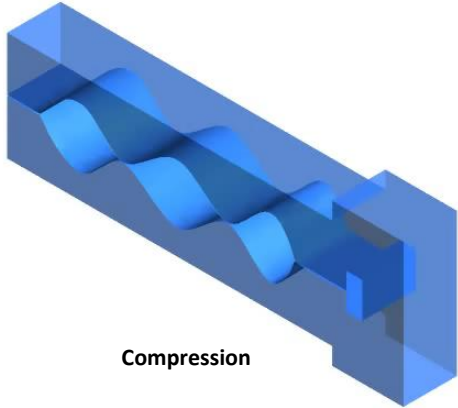
Single free surface pushed through two outlets



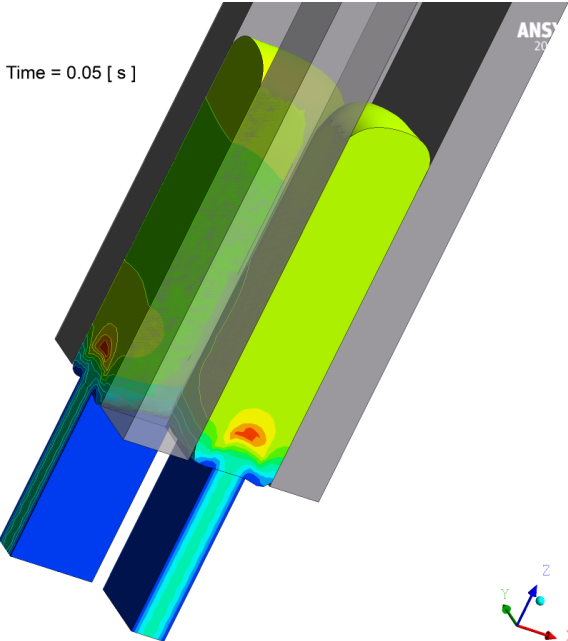
Flow around obstacle



Bi-injection : temperature



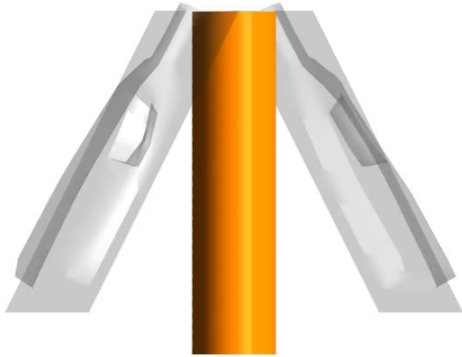
Compression



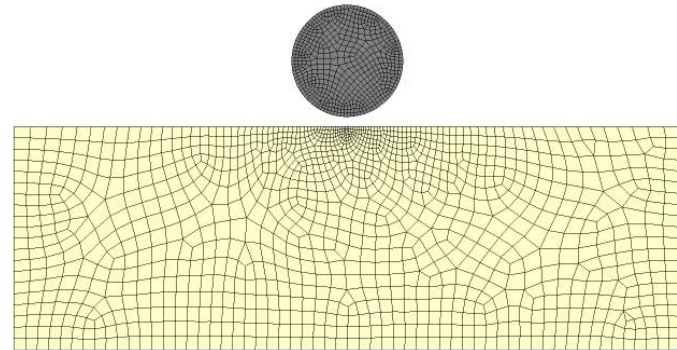
Celuka process: foam filling a calibrator

Rotating mold for pressinf, blow molding, ...

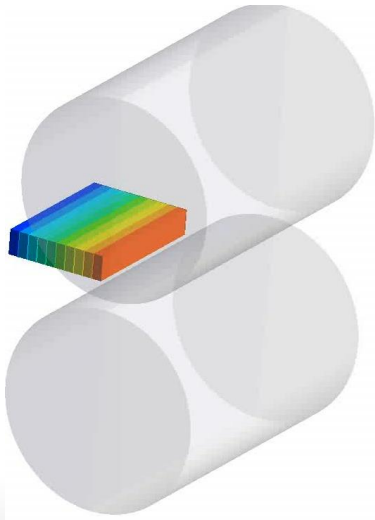
Complex mold motions can be defined to better represent the actual process.



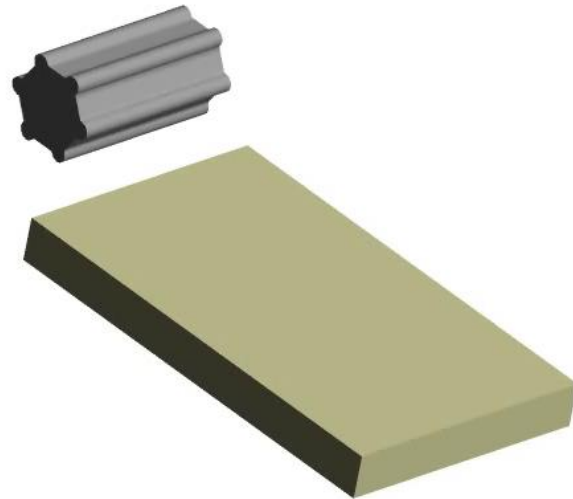
Extrusion Blow Molding



Pressing



Calendering



Rolling